



WisBar Advance 3

User's Manual
Copyright Lakeridge Software 2007

Table of Contents

Introduction	2
Taskbar Overview.....	4
Themes.....	5
Installing a Theme	6
WisBar's Settings.....	7
Customizing the Taskbar	8
Assignments/Visibility/Order	8
Builtin Commands	8
Changing the order of the taskbar button	10
Changing the clock.....	10
Changing the layout of the window title and running task icons.....	12
Others	12
Customizing Tasks	13
Customized Applications	13
Application Customization Options.....	13
Taskbar	13
Orientation	14
SIP (Soft-Input Panel).....	14
Buttons	14

Introduction

Welcome to WisBar Advance, the most powerful task manager for the Windows Mobile platform. WisBar provides you, the user, with some powerful features to make your device work for you. Add to that the fact that you can customize the presentation of many of the otherwise “boring” screen elements and you have a device that is uniquely yours.

Feature Summary

WisBar Advance allows you to do the following:

- Change the appearance of your device
- Choose what buttons are visible on the taskbar and in what order they are shown
- Customize what happens when any one of these buttons is pressed
- Choose what happens when you press the close button, on a per-application basis
- Select what program you would like to run from a cascading start menu, rather than navigate through several screens of programs.
- Close programs to conserve program memory

Interface Elements

Taskbar

The taskbar is visible in nearly every application on your device (this is the bar that resides at the top of the screen). WisBar's main interface resides in this area, allowing for the majority of its power to be accessible at any given moment. The appearance of the taskbar is directly controlled by what theme you are currently using.

Task Panel

The task panel is a customizable menu that provides easy access to the running applications as well as a few other options (i.e. “Soft-Reset”, “Close All”, etc.). This makes it possible to manage running applications with just the use of the d-pad and action key.

Taskbar Overview



From left to right:

- Start Button
- Window Title
- Running Tasks (the current task is highlighted)
- The network connectivity
- Phone status/signal strength
- Volume control
- Clock
- WisBar menu
- OK/Close button

The above picture is a sample of the default state of the taskbar. Each button (not including the running tasks) can be customized to execute an action when tapped and a second action when held, thus doubling the number of functions typically available on the taskbar.

In addition to the buttons shown above, there are the following buttons also available:

- Battery/Memory Status
- Clipboard manager
- Home
- Minimize
- System Notifications
- Rotate Screen
- 4 “custom” buttons (these have no actions assigned to them by default)

The running tasks are a special-case “button”. They are always displayed in the title area and cannot be assigned any action. Tapping on an icon in this area activates the application which the icon represents. Holding an icon will close the application.

The minimize and OK/Close buttons will only be visible when viewing windows which can be minimized and closed.

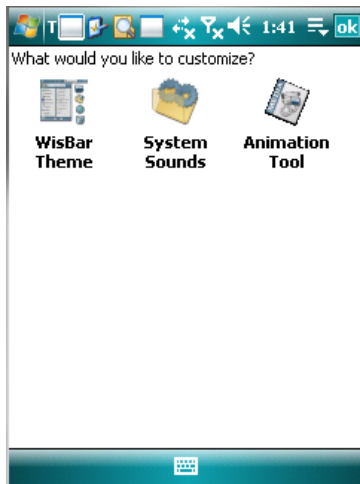
Using WisBar’s settings, you can change what buttons are visible on the taskbar and in what order they appear.

Themes

One of the primary functions (and possibly the most appealing factor) is the ability for WisBar to use themes to change the appearance of the operating system. The changing of themes is accomplished through the Theme Manager.

WisBar Advance 3 can use WisBar Advance 2 themes. However, please be aware that many elements in WisBar Advance 3 are new. As such, these elements will not be skinned when using a WA2 theme. Instead, they will appear in their default manner. To skin these new elements, you will need to use a theme designed specifically for WisBar Advance 3.

Users of WisBar Advance Desktop should already be somewhat familiar with the Theme Manager. For those who are not, you can find it by tapping on the Start Menu and going to Settings > Personal > Theme Manager.



You should see the screen to the left when opening the Theme Manager (if WisBar Advance Desktop is installed, you'll see an additional icon).

System Sounds

This dialog allows you to customize what sounds you hear when menus appear, programs are opened, closed, etc.

Animation Tool

Some of the taskbar buttons allow animations. This dialog is designed to create the files that describe the animations. Once created, these files can be assigned to a button instead of an image file.



In order to load an existing animation, tap on Menu > Load. You will then see a window which will allow you to select the existing file. Selecting a file will populate the dialog window. Otherwise, you can select an image that contains the frames of the animation. You must then specify how many frames the image contains, how many milliseconds elapses between frames and whether the animation loops.

An animation image can be any file format. Each frame must be placed next to the preceding frame in sequential order. Also, each frame must be the same dimensions. For example, if you have an animation with five frames, each 32x32, then the image's width needs to be 160 pixels wide (32x5) and 32 pixels tall. Each frame would be placed at the following pixel coordinates: (0,0), (32,0), (64,0), (96,0), (128,0).

Once the animation information is set up, tap on "Save" to save or create the animation image. If this is a new file, you will be prompted for a filename and a location. Otherwise the file will simply be saved. Tap on OK or Menu > Close to exit the tool.

WisBar Theme

This dialog is where you can select a theme or customize the current theme. By default, there are two themes available: "(Default) Crossbow", which gives you a Windows Mobile 6 look and "Windows Mobile 5", which gives you a Windows Mobile 5 look. The additional option, "Custom Theme" is automatically selected when you customize an existing theme.

Additional themes can be found online. Many can be found on our forums at <http://www.lakeridgesoftware.com/forum>. In order for any of these themes to be used with WisBar Advance, they must first be installed.

Installing a Theme

Most themes come packaged in a .zip file. This must first be extracted, typically on your desktop computer. Once extracted, place the folder that contains the theme elements in a preferred location on your device. This can be in main memory or on a storage card. Once the theme elements are placed where you want them, you must then enter the "WisBar Theme" dialog in the Theme Manager. Then, tap on Menu > Install. You will then be given a dialog where you can browse to the theme you want to install. If this is a WisBar Advance 2.x theme, then you need to tap on the dropdown box at the top of the window and select "WisBar 2.x Skins". Once located, select the theme and tap on "OK".

Once you have a theme installed, you can apply it by simply selecting it and tapping on "Apply". You will then be prompted if you want to apply system sounds and taskbar buttons. If a theme includes a sound scheme that you want to use, check the "Sound Scheme" option. If a theme includes a specific button order, check the "Taskbar Buttons" option to apply the order.

If you want to customize an existing theme (this includes changing a single element), first, select it from the list. Then, tap on Menu > Customize. This will display a dialog where you can select all of the theme elements. Many of these options are similar to one another and are fairly self-explanatory. Therefore, they will not be described in this document.

If you wish to modify the existing theme file, or create a theme file by hand, please see the Skinning Guide online at <http://www.lakeridgesoftware.com/?pg=skinning>.

If you wish to save your theme permanently (selecting a new theme will undo your changes), tap on Menu > Export. You will be given a dialog where you can specify a filename and location for the theme. You will also be prompted for the theme's name, notes, email, etc.

WisBar's Settings

WisBar Advance contains many settings which can be used to customize your device.

Plugins

This allows you to customize what plugins are loaded in WisBar Advance. As of this writing, there are currently no plugins, except for older versions of WisBar Advance Desktop.

Skin Exceptions

This dialog allows you to specify which applications are ignored by the skinning engine. Tap on "Add" to add an application to the list, or tap on "Delete" to remove it from the list.

SoftKeys (not available on Windows Mobile 2003)

These settings allow you to configure the softkey bar on the Today screen. You can change both the left and right softkey, their description and what programs are launched when tapped.

The "Hide the SoftKey bar" option allows you to hide the softkey bar on the Today screen.

Start Menu

This dialog allows you to configure the cascading start menu. You can also change the path which the cascading start menu and start panel point to.

Startup

This dialog allows you to specify whether or not WisBar starts up automatically upon a soft-reset. For compatibility purposes, a delay option is provided. Sometimes this option is necessary in order for the skinning engine to work properly. **Please be aware that if you install the program on a storage card, the startup option should not be used.** This is because storage cards are initialized after the startup programs are launched. If, on a soft-reset, you receive a warning about WisBar missing some of its components, first check to make sure that the startup option is turned off.

System Tray

New to WisBar Advance 3 is the ability to place shortcuts to applications in the system tray. The system tray is only visible on the Today screen. On Windows Mobile 2003 devices, this is the area on the right-side of the menubar. On Windows Mobile 5 and 6 devices, this is the area just above the softkey bar.

Use the "Add" and "Delete" buttons to add or remove items on the system tray. Use the "Up" and "Down" buttons to change the order in which they are displayed. The topmost item is will be the leftmost icon. Each icon will then be placed to the right of the preceding icon.

Task Panel

WisBar Advance allows you to determine what commands are visible on the task panel. Items with a checkmark will be visible on the task panel, with some exceptions: Close, Close All, Close Background and Minimize are only visible when there is at least one application open. Also note, that the "Rotate Screen" option only functions on devices running Windows Mobile 2003SE and later.

The order of the items displayed on the task panel can be changed by using the "Up" and "Down" buttons in this dialog.

Theme

WisBar Advance User's Manual

This option is an alternate method for accessing the Theme Manager mentioned above.

User Menu

The “User Menu” is a customizable menu that can be used as a kind of quick launcher. By default, the user menu has items that allow for quick creation of several PIM and messaging items, similar to the “New” menu on Windows Mobile 2003 devices.

The user can add shortcuts and specify icons for this menu. Once set up, the menu can be assigned to a taskbar button. On Windows Mobile 2003, the menu can replace the builtin “New” menu. On Windows Mobile 5 and 6, an icon can be placed just above the softkey bar on the Today screen.

Customizing the Taskbar

The taskbar is the heart and soul of WisBar Advance. Unlike the builtin taskbar, where you are given specific buttons and indicators, WisBar allows you to choose what buttons are visible, where they are placed and what occurs when they are tapped and held. The “Taskbar” dialog is organized into tabs to make things easier to find.

Assignments

This is the tab that you need to use in order to control the button’s visibility and its actions.

- First, in the *Button Name* field, choose the button that you want to customize.
- Next, in the *Action to Customize* field, select either *Tab* or *Hold*. For each button, you can select both a tap and a hold action.
- In the *Execute* field, this is where you select what happens for the selected action. There are a number of builtin actions that you can choose from by tapping on the down arrow (these are described in more detail below). Or, you can choose to have the button launch a program. To select the program, tap on the “...” button to the right of the field. This will give you a dialog where you can browse your device for any installed application.
- If you want this button to be visible, make sure that *Make this item visible on the taskbar* is checked.
- Finally, choose whether you want the button aligned to the right or left side of the taskbar.
-

Builtin Commands

WisBar Advance provides the following commands for button actions:

- **Alt On/Off**
This presses/releases the Alt key on the keyboard
- **Backlight**
This displays the backlight settings applet
- **Battery / Memory Bubble**
This displays WisBar’s battery and memory status window
- **Battery Panel**
This brings up the power control panel applet
- **Builtin Start Menu**
This displays the start menu that is built into the OS

WisBar Advance User's Manual

- Builtin Volume Bubble
This displays the volume control provided by the OS
- Calendar
This launches the calendar application
- Cascading Start Menu
This displays WisBar's cascading start menu
- Clipboard Manager
This displays WisBar's clipboard menu
- Clock Settings
This displays the clock control panel applet
- Copy (Ctrl+C)
Copies whatever text is highlighted onto the clipboard
- Ctrl On/Off
Presses/releases the control key on the keyboard
- Cut (Ctrl+X)
Performs a cut on whatever text is highlighted, removing it from the edit field and placing it on the clipboard
- Float Window
If a window is currently occupying the entire screen, it will give it a caption bar, allowing you to move and resize the window freely. Using this action again on the same window will revert the window back to its original state. **Please note that not all windows work properly with this action**
- Memory Panel
Displays the memory control panel applet
- Minimize
Minimizes the current window
- Network Bubble
Displays the network status bubble near the taskbar
- Next Appointment
Displays the next appointment bubble near the taskbar
- Notification
Displays the notification bubble near the taskbar, if there are currently any pending notifications
- Paste (Ctrl+V)
Pastes whatever is on the clipboard into the current edit field
- Phone Bubble
Displays the phone status (on phone devices) near the taskbar
- Power Off
Turns off the device
- Profiles
Displays the volume profiles window
- Rotate Screen (WM2003SE and later)
Rotates the screen into either left-handed or right-handed mode. The orientation is specified by the *Rotate the screen to right-handed mode* option on the *Others* tab, mentioned below. If the device is already in landscape, the orientation is returned to portrait. This option requires that you're using Windows Mobile 2003SE or later

WisBar Advance User's Manual

- **Run**
Displays a *Run* dialog for entering programs manually. This is similar to the *Run* dialog on desktop versions of Windows
- **Select All (Ctrl+A)**
Selects all of the text in the current edit field
- **Shift On/Off**
Presses/releases the Shift key on the keyboard
- **SIP Panel**
Displays/hides the current Soft-Input Method (i.e. the virtual keyboard, Transcriber, etc.)
- **Skinnable Volume Bubble**
WisBar supplies a skinned volume bubble to replace the builtin volume bubble. This option displays WisBar's volume bubble
- **Soft Reset**
Performs a soft-reset on the device
- **Start Panel**
Displays the start panel
- **Switch Task**
This will switch to the next open window
- **Tasks Panel**
Displays the tasks panel
- **Today**
Returns to the Today screen
- **Toggle Mute**
Turns the system volume on or off
- **Toggle Screen On/Off**
Turns the display on or off. This option is designed to be assigned to a hardware button
- **User Menu**
Displays the user menu described above

Changing the order of the taskbar buttons

When customizing the taskbar, WisBar allows you to choose the position in which buttons appear. The buttons are always aligned either to the left or to the right side of the screen.

To change the order of the buttons, in WisBar's settings, go to Taskbar > Order. Then, select whether you want to change the order of the right-aligned or left-aligned icons. The buttons that are currently visible (and set to the proper alignment) will be displayed in a vertical list. Use the *Up* and *Down* buttons to change the positions. Buttons moved towards the top of the list will appear to the left of any button below.

One thing to note: you cannot change the order of the window title/running tasks. These items are always placed in the remaining space between the right-aligned and left-aligned icons and will occupy the entire available space.

Changing the Clock

In the *Clock* tab, you can change the appearance of the taskbar's clock.

The *Clock Mode* field allows you to choose if the clock will display on one line or two.

WisBar Advance User's Manual

The *This item is visible* checkbox corresponds to the visibility option on the *Assignments* tab. It's a quick way of getting at the same option.

If displaying a two-line clock, both the *Line 1 Format* and *Line 2 Format* fields are used. If a single-line clock is being displayed, only the *Line 1 Format* field is used. The following are the formatting options for the fields:

	Command	Meaning
	h	Hours with no leading zero for single-digit hours; 12-hour clock
	hh	Hours with leading zero for single-digit hours; 12-hour clock
	H	Hours with no leading zero for single-digit hours; 24-hour clock
	HH	Hours with leading zero for single-digit hours; 24-hour clock
	m	Minutes with no leading zero for single-digit minutes
	mm	Minutes with leading zero for single-digit minutes
	t	One character time marker string, such as A or P
	tt	Multicharacter time marker string, such as AM or PM
	d	Day of month as digits with no leading zero for single-digit days
	dd	Day of month as digits with leading zero for single-digit days
	ddd	Day of week as a three-letter abbreviation
	dddd	Day of week as its full name
	M	Month as digits with no leading zero for single-digit months
	MM	Month as digits with leading zero for single-digit months
	MMM	Month as a three-letter abbreviation
	MMMM	Month as its full name
	y	Year as last two digits, but with no leading zero for years less than 10
	yy	Year as last two digits, but with leading zero for years less than 10
	yyyy	Year represented by full four digits

For example, in order to display 1:35PM, you would use "h:mmtt" (without the quotes).

Changing the layout of the window title and running task icons

On the *Title/Tasks* tab, you can change how the window title and running task icons are laid out.

Select *Display the running tasks* if you want to see what applications are running directly from the taskbar.

Select *Close the tasks with tap and hold* if you want to be able to close a program without switching to it or using the task panel. With this option set, simply tap and hold on the icon of the program you want to close and WisBar will close it for you.

You can choose to place the window title above, below, to the right or to the left of the running tasks. You can also choose to align the window title to the left, center or right of the available display area.

Desktop/Today Screen Title

This field lets you choose what text is displayed in the window title field when you're on the taskbar. By default it shows *Start*, just like the builtin taskbar does.

Others

The *Others* tab contains additional settings related to the taskbar.

Display the actual notification icon

If this option is set, when a notification is pending, any skinned icon will be ignored and the actual notification icon will be used instead.

Rotate the screen to right-handed mode

This option is used in conjunction with the *Rotate* taskbar command. If this is set, the *Rotate* command will rotate the screen into right-handed mode. If it is not set, the screen will be rotated into left-handed mode.

The network icon uses the default icon

The phone icon uses the default icon

New to WisBar Advance 3 is the ability to display the actual network and phone status. If these options are set, then the skinned icons will be ignored.

As a note: These options don't work on Treo devices. As of this time, we are unsure as to why that is.

Hide the network button when disconnected

If you're finding the taskbar a little cramped, this option will hide the network status button unless the device is connected to a network.

Display the battery bar

WisBar Advance 3 provides a battery bar that covers the top portion of the taskbar. Use this option to turn it on or off.

Show the active task

WisBar Advance 3 can now highlight the task that's currently running (when the running tasks option is turned on). If this option is cleared, the current task's icon will be omitted, therefore only showing the tasks that you are running in the background.

Customizing Tasks

WisBar Advance 3 introduces several new options for how your applications are treated that are not currently found in any other task manager. These options allow you to fully experience the capabilities that your device has to offer.

To customize your tasks (aka running applications), go to WisBar's settings > Tasks.

The close button minimizes

By default, the close button in WisBar Advance will close the application, similar to how desktop versions of Windows behaves. If, however, you like how Windows Mobile handles applications by minimizing windows instead of closing them, check this option.

Skip desktop when switching tasks

This option is related to the *Switch Task* taskbar command mentioned above. If this option is set, the Desktop/Today window is skipped when switching running windows using the *Switch Task* command.

Skin the wait cursor

WisBar Advance 3 allows you to customize the wait cursor (the spinning "wheel" during long operations). This option allows you to switch between the skinned icon or the default icon.

Customized Applications

This field displays the list of applications which you have customized. Each application is represented by its EXE name, rather than a window title, allowing you to customize how WisBar behaves in that application.

To add a new application, tap on *Add*. To modify or delete an application's customization, select the application from the list and tap on *Modify* or *Delete*.

Application Customization Options

The options for customizing an application are organized into tabs to make finding the specific option you're looking for easier.

Taskbar

This tab is used to set up the application and how it is treated by WisBar.

First, select the executable name. You can use the "..." button to select it from a list of installed programs. Next, select the visibility option. You can have WisBar show the task normally, hide it completely (this is recommended for applications you want to run in the background, but not otherwise manage), hide it from the task panel or hide it from the taskbar.

Finally, select what you want the close button to do.

<i>Default</i>	Uses the close button action defined by the <i>Close Button Minimizes</i> option above
<i>Close</i>	The close button will always close the task
<i>Minimize</i>	The close button will minimize the task

WisBar Advance User's Manual

Orientation

WisBar Advance 3 gives you the ability to specify what orientation the window should be displayed in. For example, if you use Excel Mobile to edit spreadsheets, you may want it to always run in landscape mode.

To rotate the screen when an application is focused, change the *When entering the application* option to "Rotate the screen". Then, select the viewing angle for the program.

To rotate the screen when the program is closed or another program becomes focused, do the same for the *When leaving the application* option.

SIP

This tab allows you to choose what SIP (Soft-Input Panel) should be used with the application. If you want to customize the SIP, choose *Change SIP* and select the SIP from the list.

Some programs, like Pocket PuTTY, don't always display an SIP when launched from the Today screen. For these kind of applications, you can force the SIP to be visible with the first option. Or, if you have an application where you'd like the SIP button to be hidden, you can instruct WisBar to hide the SIP.

Buttons

WisBar Advance 3 will let you choose to hide some of the taskbar buttons when you're in a customized application. Only buttons that are set to visible in the taskbar customization section will be available here. If you want to hide a button, simply place a checkmark next to it.

For instance, if you want the clock to be visible everywhere except on the Today screen you would do the following:

- Customize SHELL32.EXE
- Select the *Buttons* tab
- Place a checkmark next to *Clock*
- Save the settings